

VACANT LAND FOR SALE

4850 S. Noland Road, Kansas City, Missouri



PRICE REDUCED!

SALE PRICE: \$525,000 | 4.09 ACRE LOT

DEMOGRAPHICS

	1 mile	3 miles	5 miles
Estimated Population	5,981	59,655	151,379
Avg. Household Income	\$80,247	\$82,711	\$77,039

- Located on the SWC of 40 Highway & Noland Road
- 40 Highway & Noland Road carry over 40,000 cars per day
- Zoned B4-2, R-2.5
- Nearby tenants include Gordmans, Olive Garden, Starbucks, HyVee, Furniture Deals, Old Time Pottery, and many more

[CLICK HERE TO VIEW MORE LISTING INFORMATION](#)

For More Information Contact:

WILLIAM GLASGOW | 816.412.7394 | wglasgow@blockandco.com

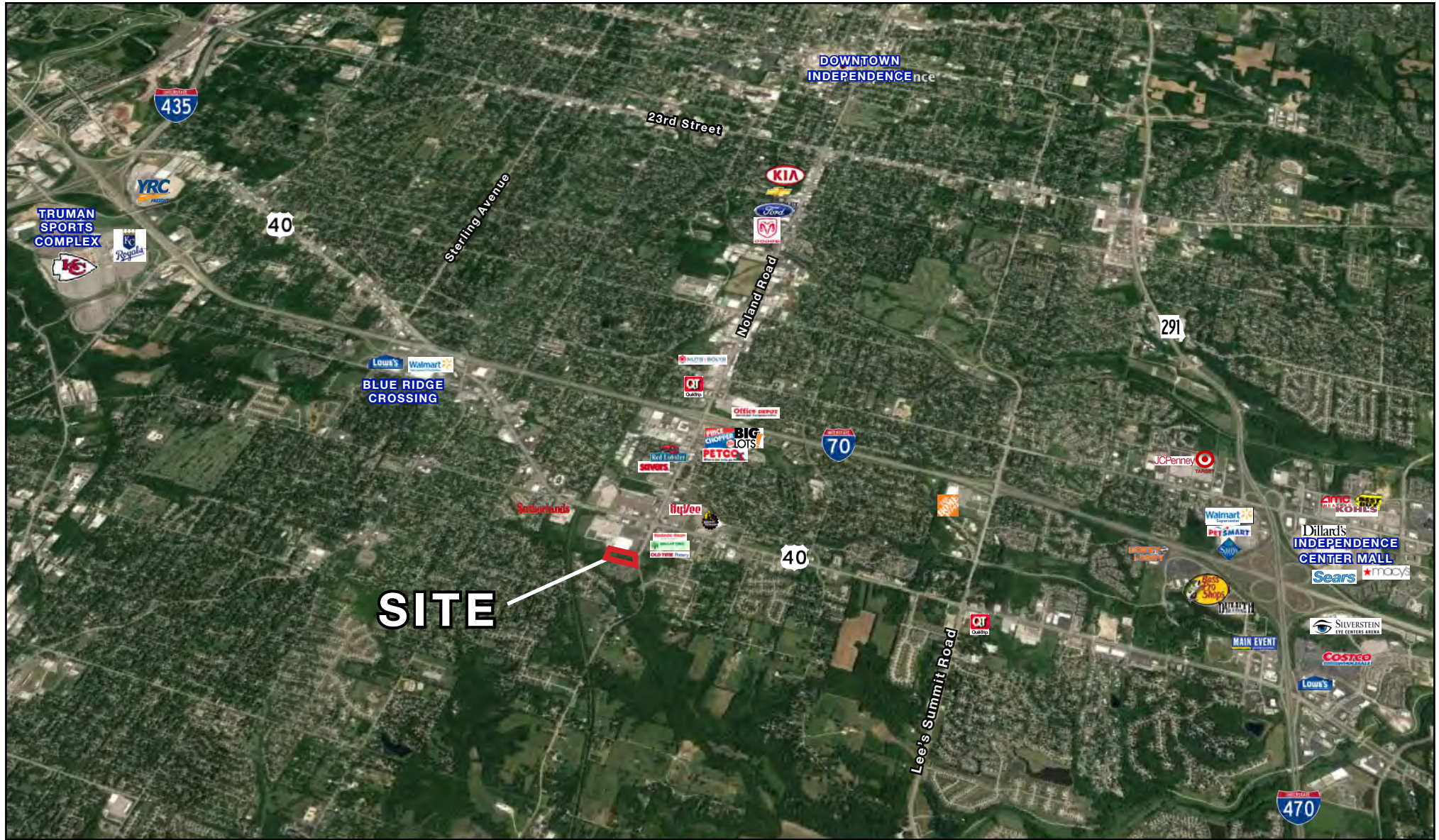
Exclusive Agent



VACANT LAND FOR SALE

4900 S. Noland Road, Kansas City, Missouri

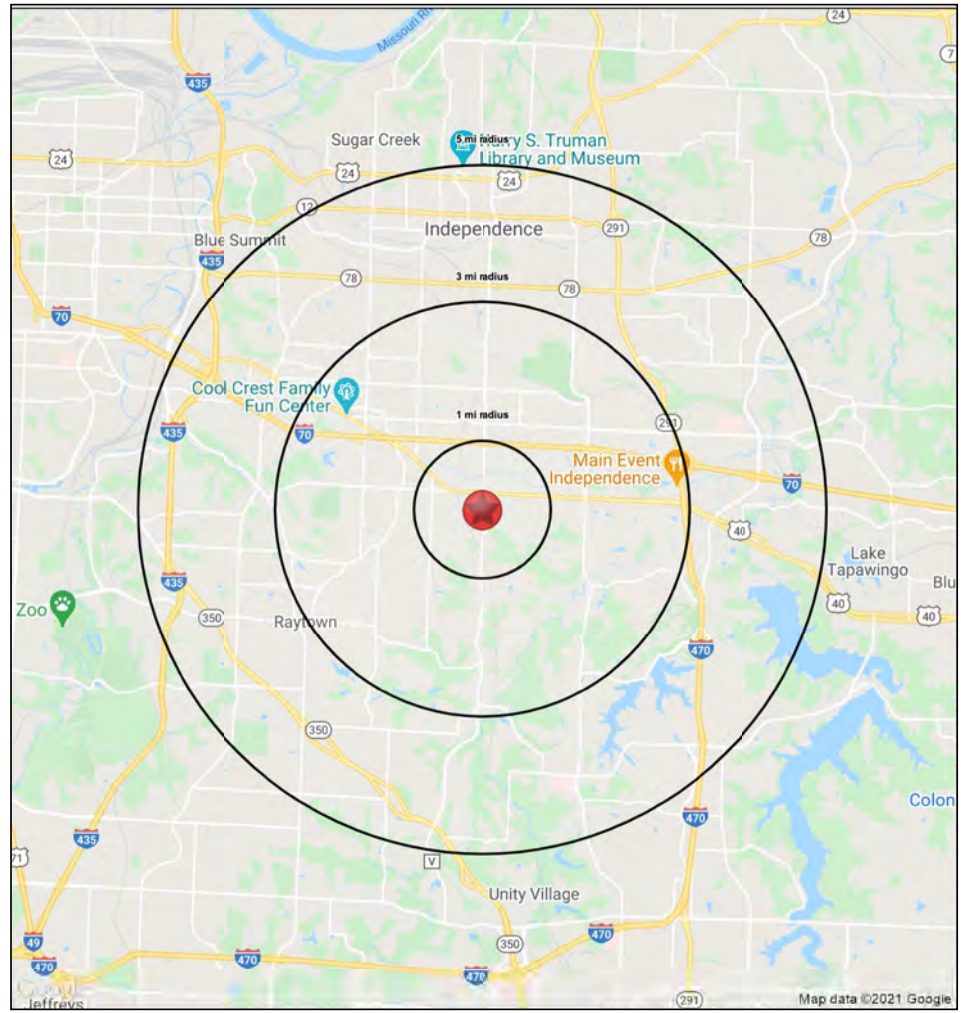
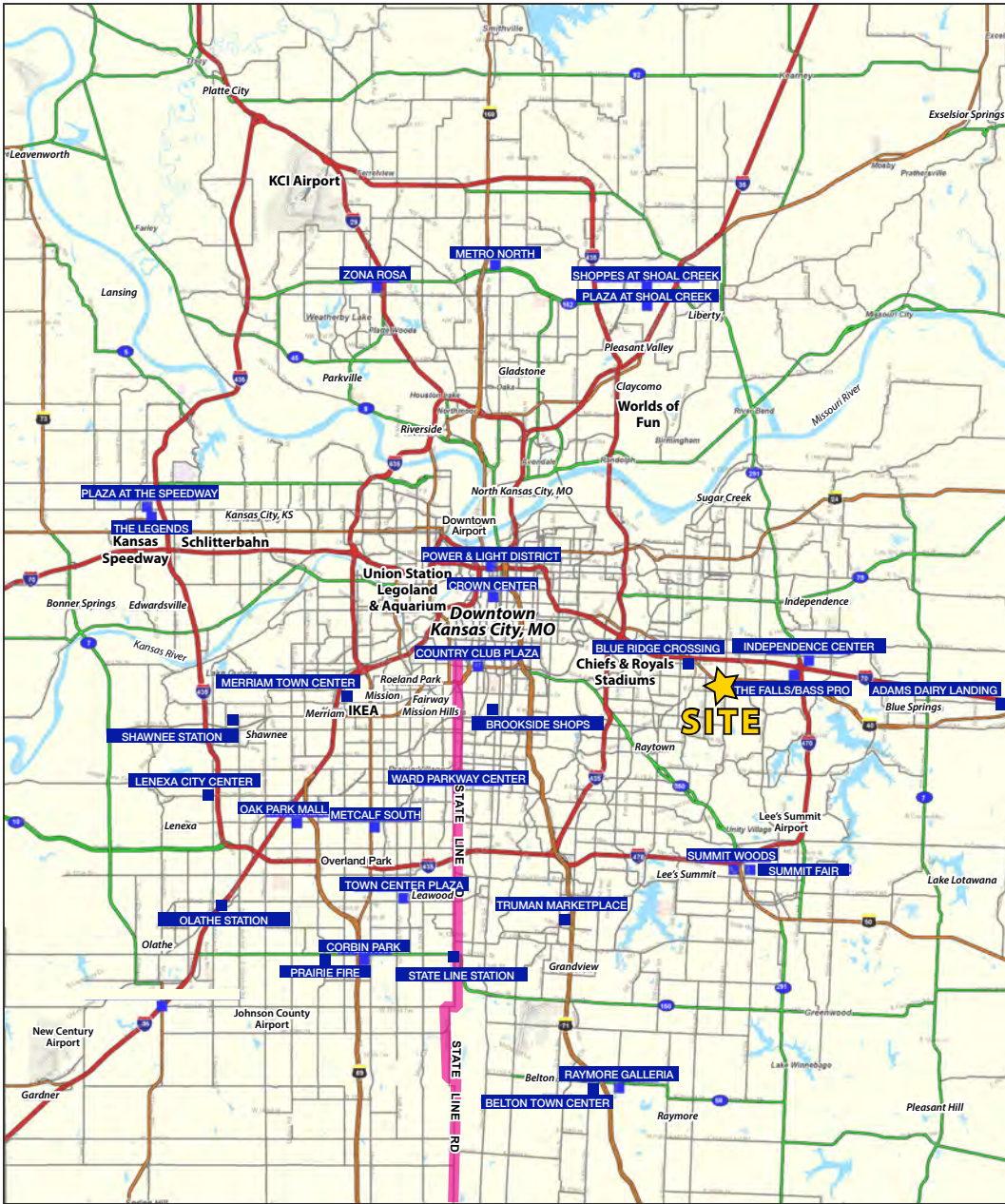
AERIAL





VACANT LAND FOR SALE

4900 S. Noland Road, Kansas City, Missouri





VACANT LAND FOR SALE

4900 S. Noland Road, Kansas City, Missouri

4900 S. Noland Road		1 mi radius	3 mi radius	5 mi radius
Kansas City, MO 64133				
POPULATION	2021 Estimated Population	5,981	59,655	151,379
	2026 Projected Population	5,995	59,485	151,879
	2010 Census Population	6,060	60,640	150,954
	2000 Census Population	5,613	56,118	143,244
	Projected Annual Growth 2021 to 2026	-	-	-
	Historical Annual Growth 2000 to 2021	0.3%	0.3%	0.3%
	2021 Median Age	43.6	42.8	41.2
HOUSEHOLDS	2021 Estimated Households	2,641	25,854	64,442
	2026 Projected Households	2,652	25,905	64,840
	2010 Census Households	2,636	25,886	63,370
	2000 Census Households	2,422	24,015	60,465
	Projected Annual Growth 2021 to 2026	-	-	0.1%
	Historical Annual Growth 2000 to 2021	0.4%	0.4%	0.3%
RACE AND ETHNICITY	2021 Estimated White	76.8%	77.3%	76.2%
	2021 Estimated Black or African American	15.3%	13.9%	14.3%
	2021 Estimated Asian or Pacific Islander	1.6%	2.0%	2.1%
	2021 Estimated American Indian or Native Alaskan	0.5%	0.5%	0.5%
	2021 Estimated Other Races	6.0%	6.4%	6.8%
	2021 Estimated Hispanic	7.4%	7.6%	7.7%
INCOME	2021 Estimated Average Household Income	\$80,247	\$82,711	\$77,039
	2021 Estimated Median Household Income	\$55,103	\$60,540	\$59,211
	2021 Estimated Per Capita Income	\$35,483	\$35,881	\$32,886
EDUCATION (AGE 25+)	2021 Estimated Elementary (Grade Level 0 to 8)	2.7%	2.4%	2.5%
	2021 Estimated Some High School (Grade Level 9 to 11)	5.8%	4.7%	5.5%
	2021 Estimated High School Graduate	30.9%	33.3%	33.2%
	2021 Estimated Some College	24.5%	25.6%	24.6%
	2021 Estimated Associates Degree Only	8.4%	6.5%	7.4%
	2021 Estimated Bachelors Degree Only	17.4%	17.9%	17.0%
	2021 Estimated Graduate Degree	10.2%	9.6%	9.8%
BUSINESS	2021 Estimated Total Businesses	295	1,544	4,812
	2021 Estimated Total Employees	2,927	16,038	58,782
	2021 Estimated Employee Population per Business	9.9	10.4	12.2
	2021 Estimated Residential Population per Business	20.3	38.6	31.5

